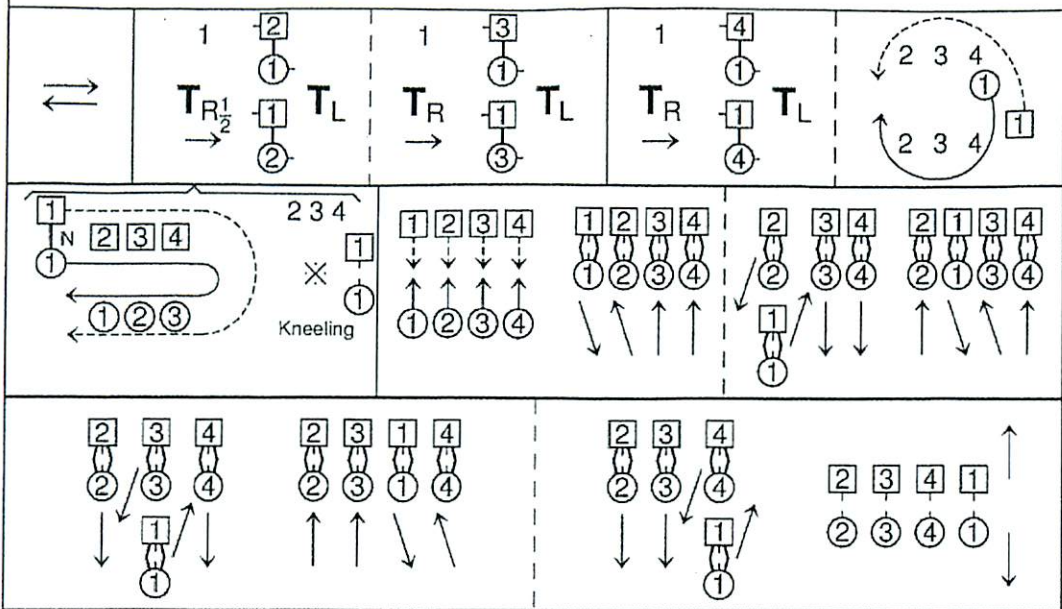
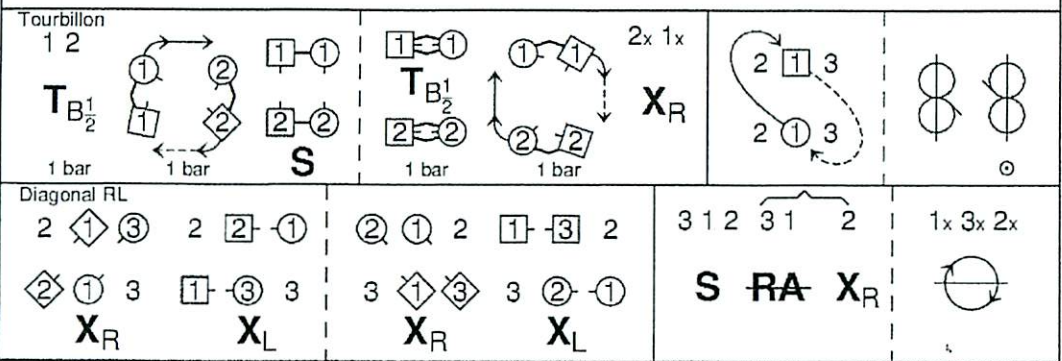


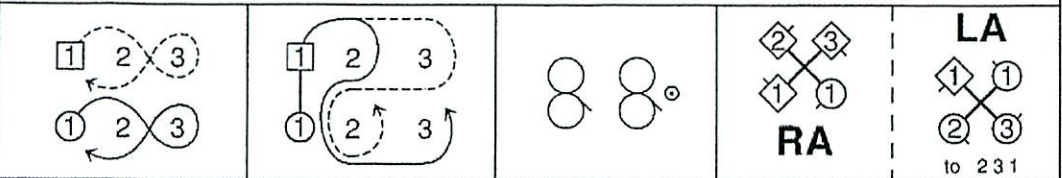
**THE FOULA REEL** Use Running Step **4x48 J**



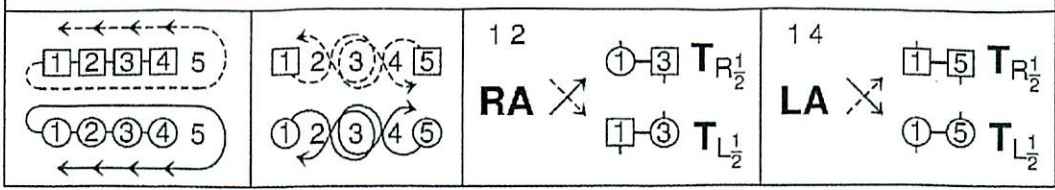
**THE SINGING SANDS** **3x32 S**



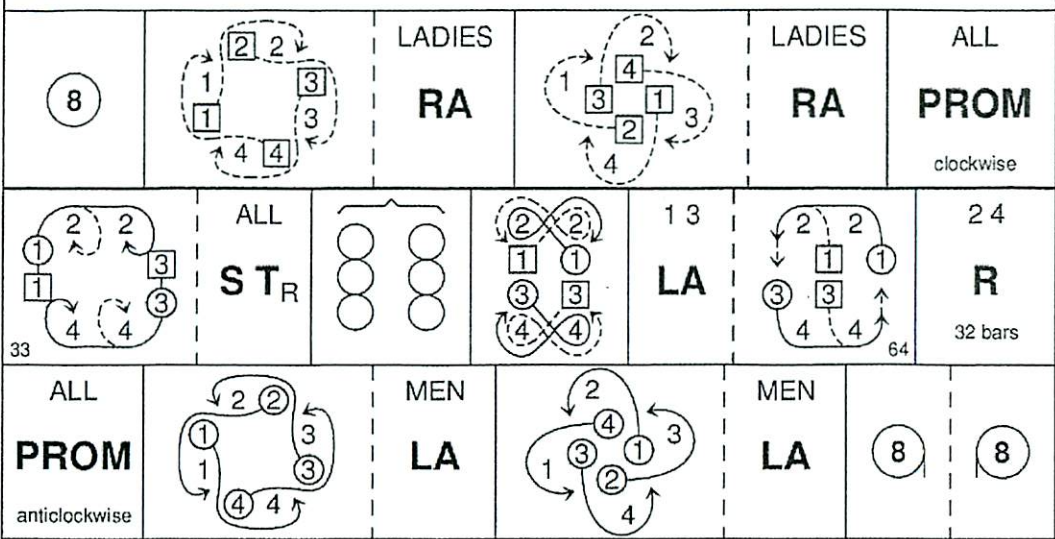
**THE BREAKDOWN** **3x32 R**



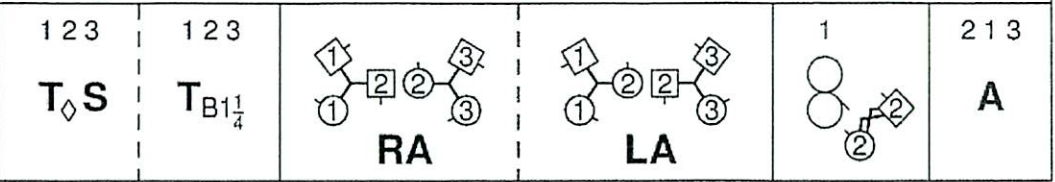
**THE MILLER OF SESSNIE** **5x32 J**



**IAN POWRIE'S FAREWELL TO AUCHTERARDER** **128 J**  
Square Set

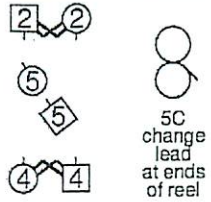
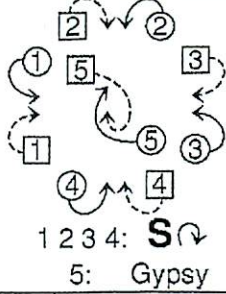
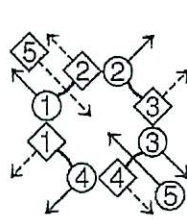
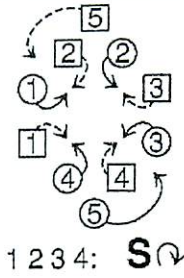
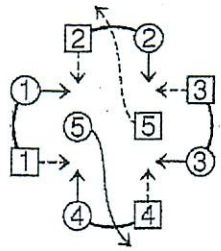


**THE BYRON STRATHSPEY** 3 Couples **3x32 S**

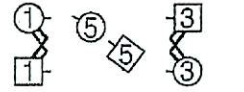


# HUNGARIAN BRIDE

5x48 R



5C change lead at ends of reel



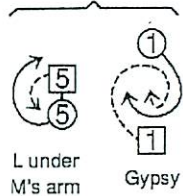
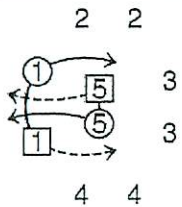
5C change lead at ends of reel



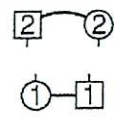
RA



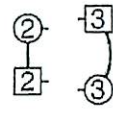
LA



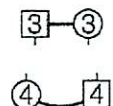
L under M's arm  
Gypsy



R



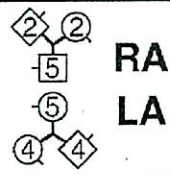
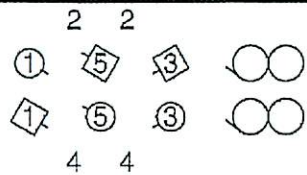
R



R

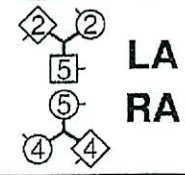
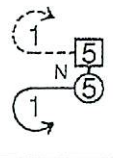
# SPIFFIN'

5x32 J



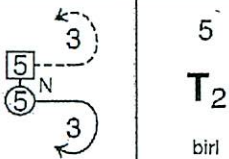
RA

LA

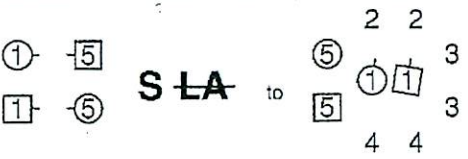


LA

RA



T<sub>2</sub>  
birl

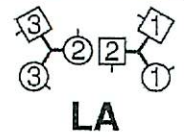
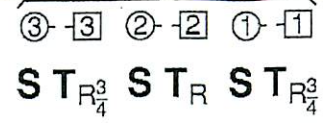
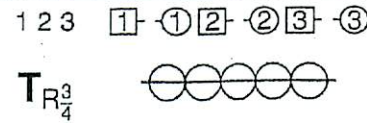


S LA

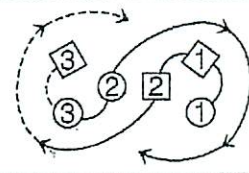
1st couple repeat bars 1-32, dancing across the dance.  
2nd C repeat up and down; 3rd C across;  
4th C up and down

# THE FOUNDLING

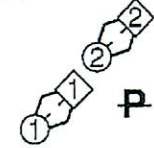
3x32 S



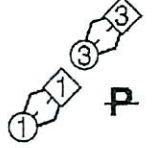
LA



1 2 3  
ST<sub>B</sub>



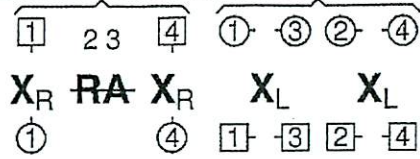
P



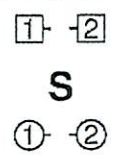
P

# A TRIP TO BAVARIA

4x32 R



Repeat 3 times to places



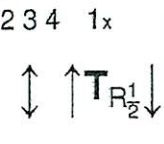
S



R



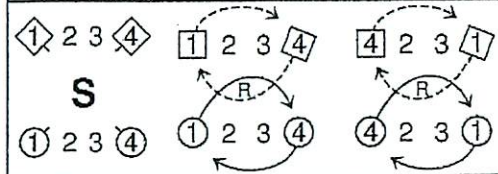
R



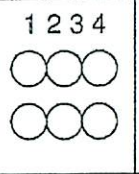
TR<sub>2/4</sub>

# MACLEOD'S FANCY

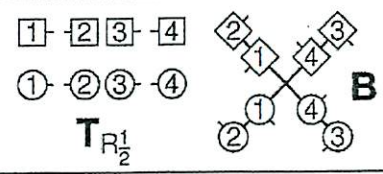
4x32 J



S



TR<sub>1/2</sub>



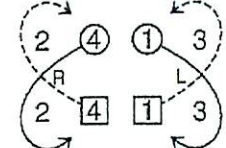
B

ALL

T<sub>R</sub> to 2 4 1 3

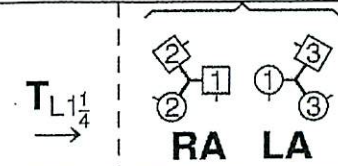
4 1

S

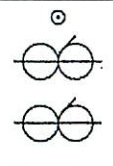
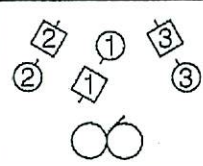


# SHADOW

3x32 J



RA LA



3 1 x 2

S X<sub>R</sub>

3 1 2

6



### THE CORIAN STRATHSPEY 3 couples 3x32 S

2x 3 1x 3 <b>S</b> <b>T<sub>◇</sub></b>	<b>S + LINK</b>	<b>RA</b>	<b>LA</b>

### DOUBLE POSTIE' S JIG 4x32J

1234 <b>S</b>			
			1234 <b>T<sub>R</sub></b>

### ROYAL ALBERT COUNTRY DANCE 8x32 R

<b>RA</b>	<b>LA</b>	→ ←		6 bars	<b>T<sub>L</sub></b> <b>T<sub>L</sub><sup>1/2</sup></b>	<b>P</b>

### THE PRESIDENT'S QUADRILLE 128 R

8 bars Intro.	Figure 1 ALL ↑ ↓		Figure 2 Allemande Turn	1 3 2 4 <b>R</b>	
1 3 2 4 <b>R</b>	Figure 3			1 3 2 4 <b>T<sub>R</sub><sup>1/2</sup></b>	
Figure 4 <b>S</b>			<b>R</b>	Figure 5 ALL ↑ ↓	

### THE FIRST RAIN OF SPRING 3x32 J

			DOUBLE FIGURE EIGHT 	1 3 <b>T<sub>R</sub><sup>3/4</sup></b>	
Half Celtic Reel 				2 3 1 <b>S</b>	

### CHERRY BLOSSOMS 8x32 S

12 1 2 <b>S RA</b>			12 <b>XR</b>	1M 2W <b>S TB<sub>3/4</sub></b>	Ad 	<b>STB<sub>3/4</sub></b>
-----------------------	--	--	-----------------	------------------------------------	--------	--------------------------

